



**Connecting Analytic Video Server  
To ATEAS Security VMS Guide**

**version 1.2**

Copyright © 2013 Institute of Digital and Optical Technologies B. V.

All rights reserved

## Contents

<b>CONTENTS .....</b>	<b>2</b>
<b>1 INTRODUCTION .....</b>	<b>3</b>
<b>2 INSTALLING ATEAS SECURITY AND ANALYTICVIDEO SERVER.....</b>	<b>3</b>
<b>3 STARTING ATEAS SECURITY.....</b>	<b>4</b>
<b>4 CONNECTING ATEAS SECURITY TO ANALYTICVIDEO SERVER.....</b>	<b>6</b>
<b>5 CONFIGURING ANALYTICVIDEO ONVIF EVENTS .....</b>	<b>8</b>
<b>6 CONTACT US.....</b>	<b>12</b>

## 1 INTRODUCTION

ATEAS Security® is one of the few VMS on the market that support ONVIF and, therefore, *AnalyticVideo Server* natively.

## 2 Installing ATEAS Security and AnalyticVideo Server

To install *AnalyticVideo Server* read “Installation” chapter in AnalyticVideo Server User Guide.

To minimal installation of ATEAS Security® to work with is:

- ATEAS Administrator
- ATEAS Observer
- ATEAS Server



During installation of ATEAS Server don't forget to enter the address or hostname of the computer running the administration service [Figure 1]. However, if you forget to do it, you can change this value in “server.ini” file located in the installation folder later.

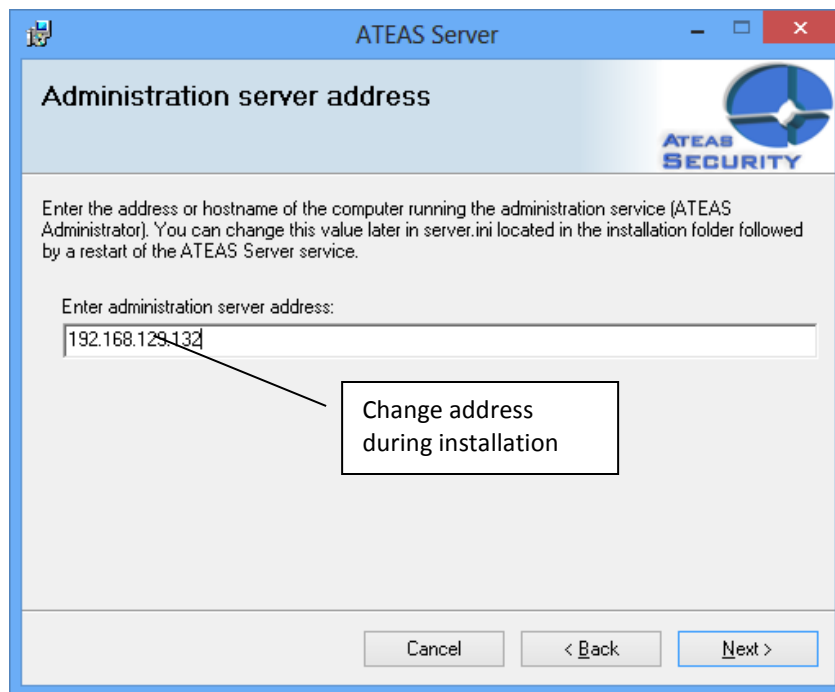


Figure 1. Changing address during installation.

### 3 Starting ATEAS Security

To start using ATEAS Security VMS start ATEAS Observer. If you login for the first time use default administrator credentials (username: admin, password: admin) [Figure 2].

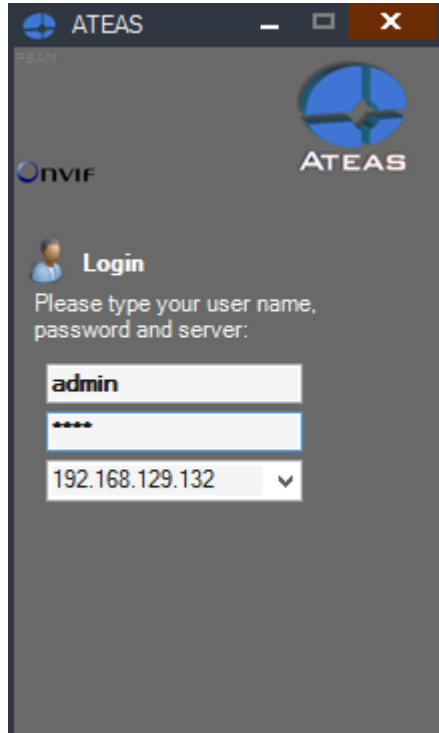


Figure 2. Starting ATEAS.

After that, you will be asked to change your password (only if you logged in with default username and password) and set up your license. To use your free license for up to 4 video cameras click “Start License” button and then click Apply.

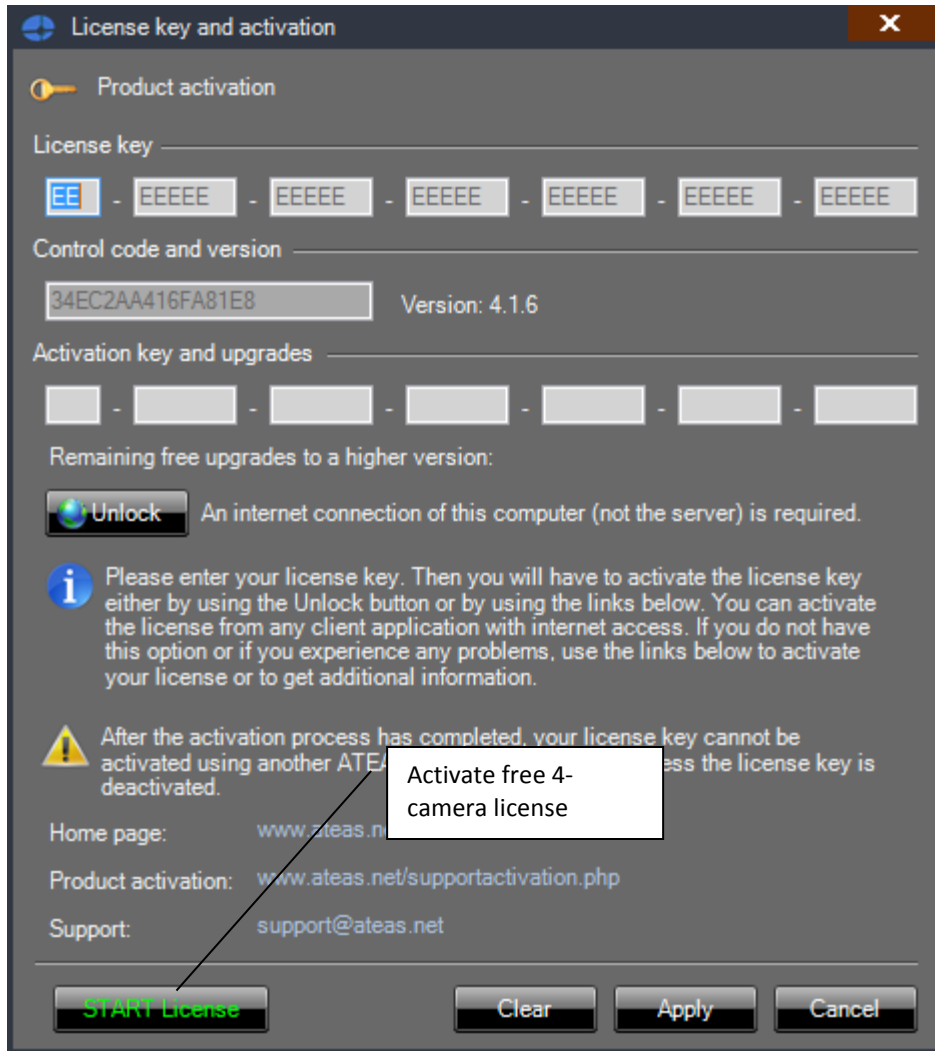


Figure 3. Changing license.

After successful logging in you must start new ATEAS server. Choose in main menu “Administration-Users”. In the opened window, choose user, in “Server functions” press “New” button. In pop-up window fill in local server IP, press “Apply” [Figure 4].

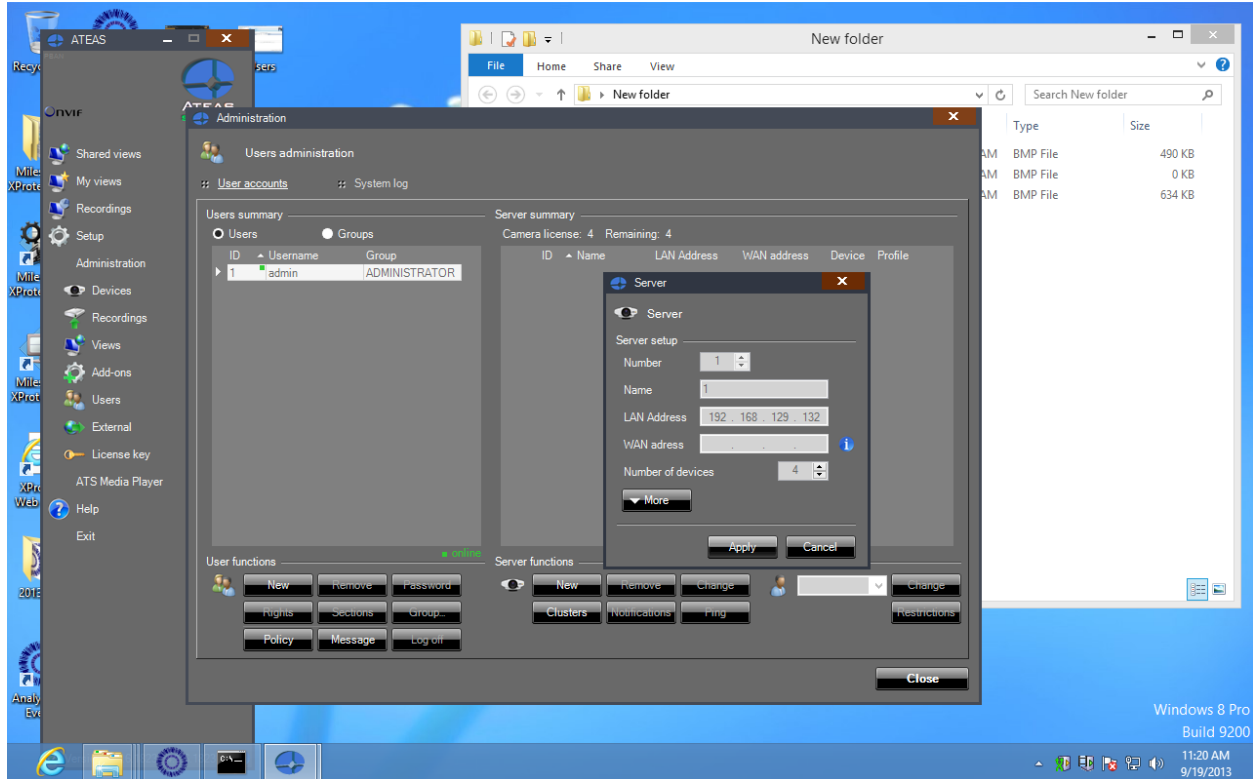


Figure 4. Adding new server.

After successful logging in you must start new ATEAS server. Choose in main menu “Administration-Users”. In the opened window, choose user, in “Server functions” press “New” button. In pop-up window fill in local server IP, press “Apply”.

#### 4 Connecting ATEAS Security to AnalyticVideo Server

Now you can add the channels of *AnalyticVideo Server*. To do this in the main menu choose “Administration-Devices”. Choose created server in the list of servers. Then in the “Add device” field input *AnalyticVideo Server* device address and port. Press “Start” [Figure 5]. If the devices is discovered successfully, you will be offered to input its name.



For adding of the *AnalyticVideo Server* read “Configuration Overview” chapter in AnalyticVideo Server User Guide.

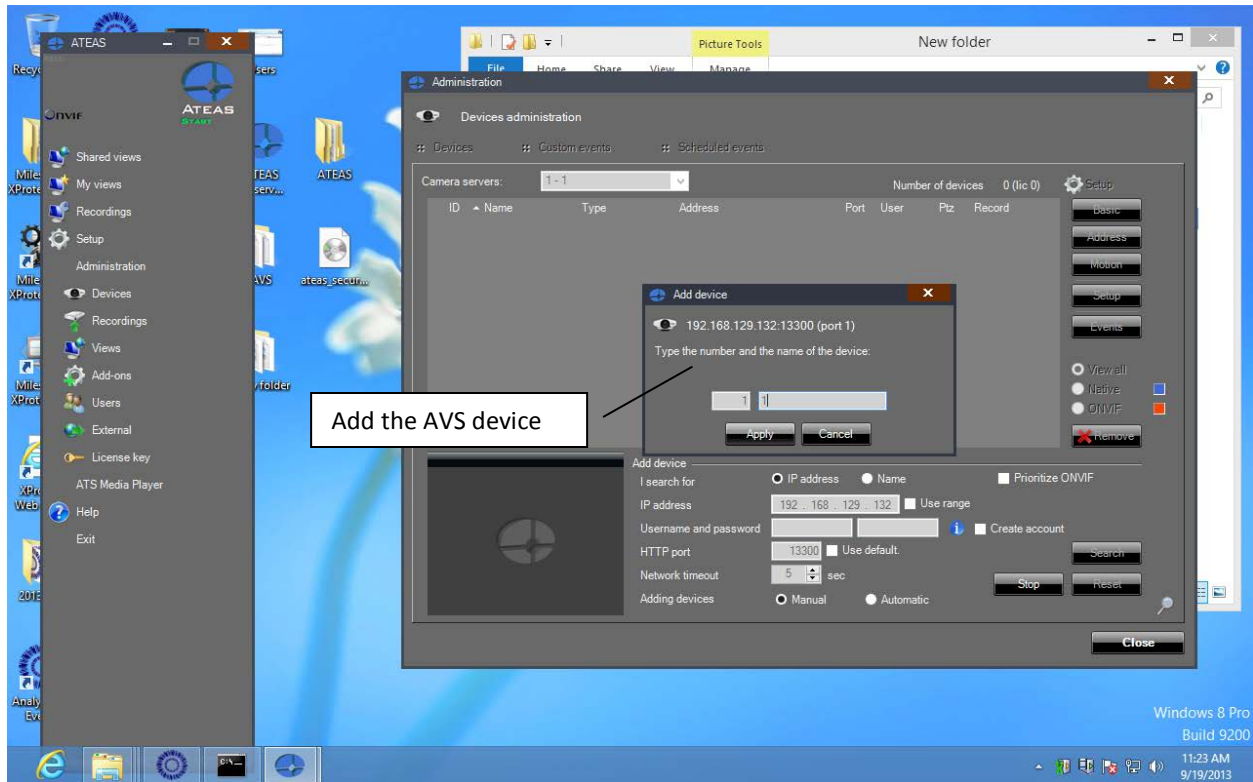


Figure 5. Adding AnalyticVideo Server devices to ATEAS server.

To view the video output for the added AnalyticVideo Server device you must select profile using the JPEG-based codec. The simplest way to do this is to press “Basic” button in the button list to the right of the main frame [Figure 6].

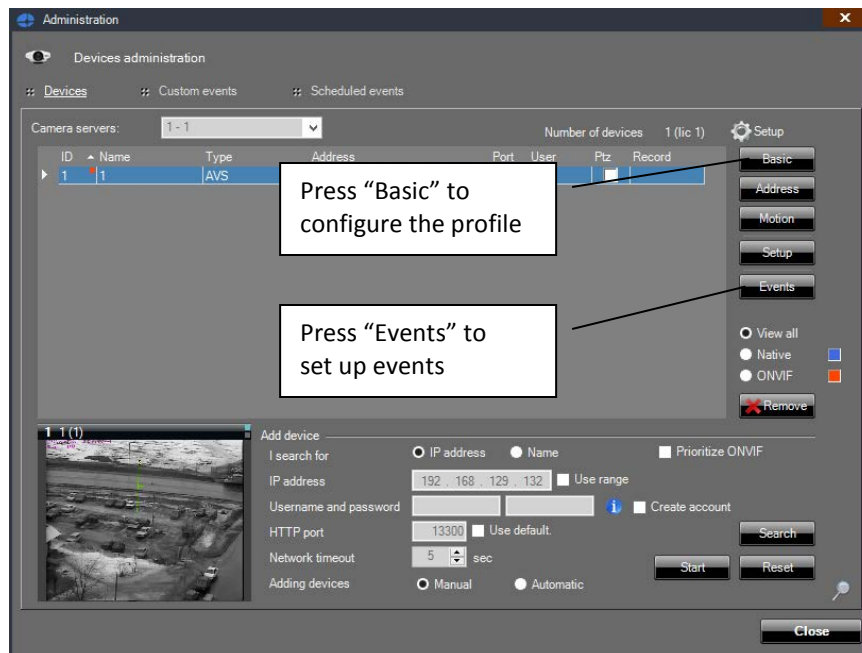


Figure 6. Changing the profile to enable preview.

Then select one of JPEG (MJPEG) profiles from the list and click “Apply” button [Figure 7].

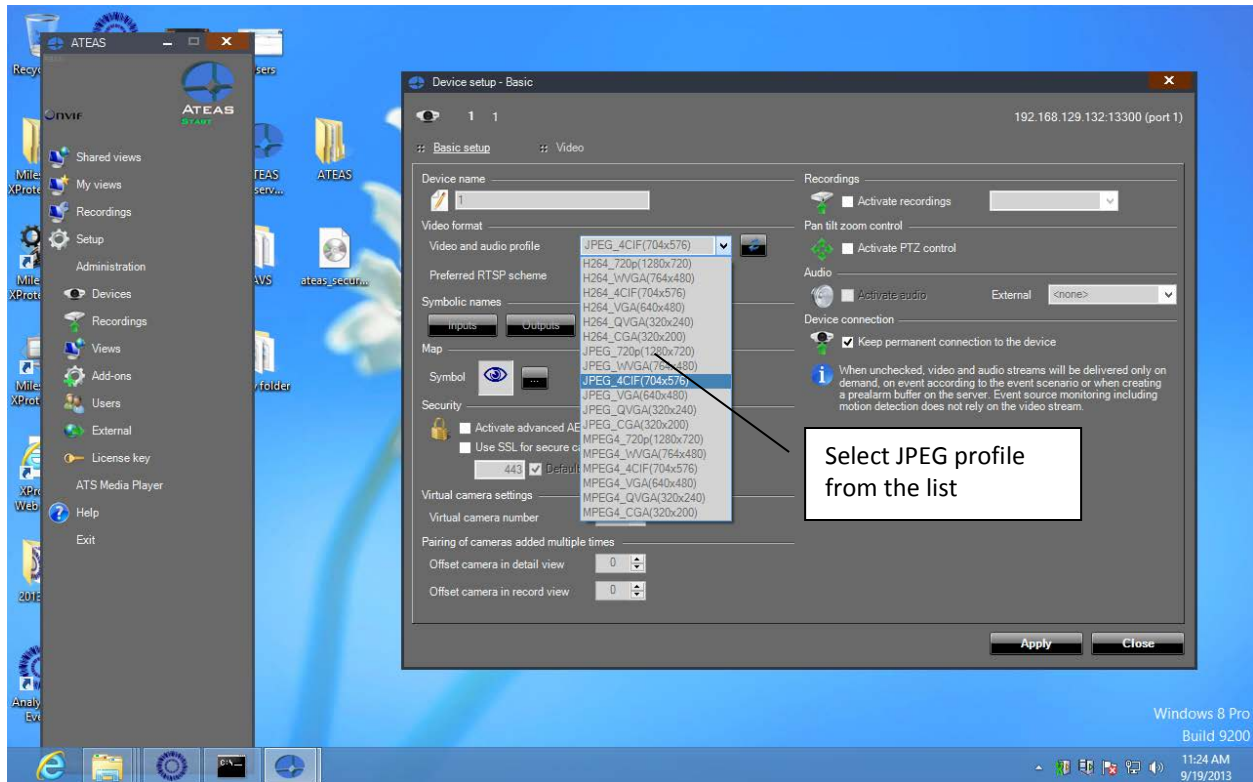


Figure 7. Changing the profile to enable preview.

## 5 Configuring AnalyticVideo ONVIF events

Now you can set up AnalyticVideo ONVIF events. Choose devices from the added device list and click “Events” button [Figure 6]. In the “Event sources” list select “Onvif”, press “+” button to add a new event source. Choose available event source from the list and input its name [Figure 8].



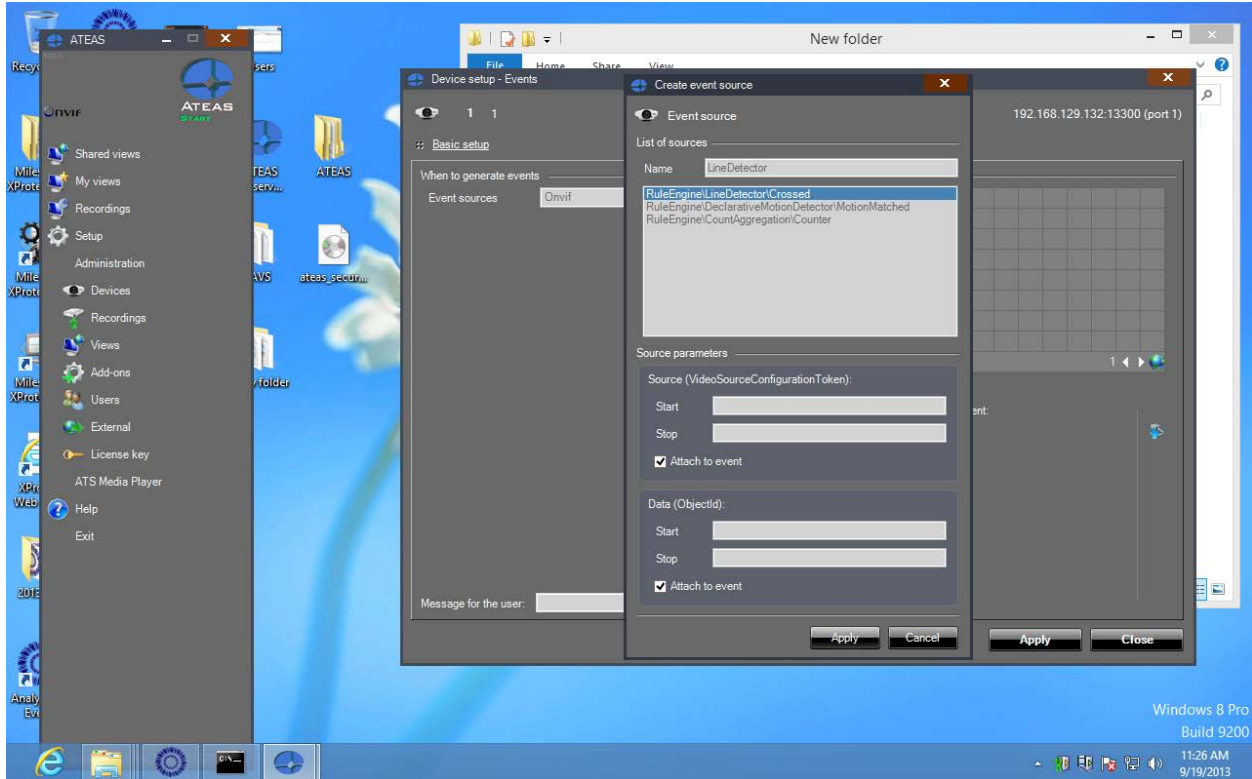


Figure 8. Adding event source.

After successfully adding the event source, in the list instead of “Never” select “Schedule”. In the opened window select “Event only generation”. Also, switch “Event source reset time” and “Maximum event duration” to 1 second [Figure 9].

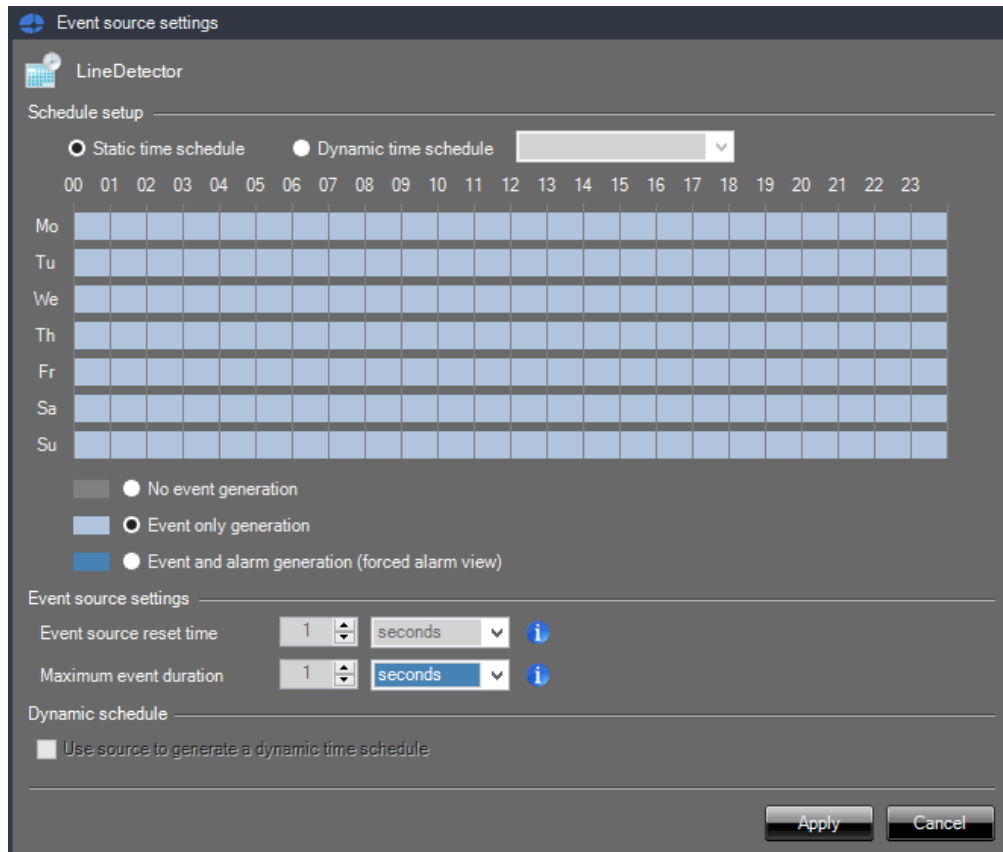


Figure 9. Adding event source.

After you receive the first event the windows with preview from the corresponding device will open. In the bottom right of the “Live views” tab press the monitor icon, choose the number of shown frames and profile name, then click “Apply” [Figure 10]. Then select any frame and select the device name from the bottom list. After that video from the added device will appear. Then switch back to the “Events” tab, you will see the incoming AnalyticVideo events there [Figure 11].

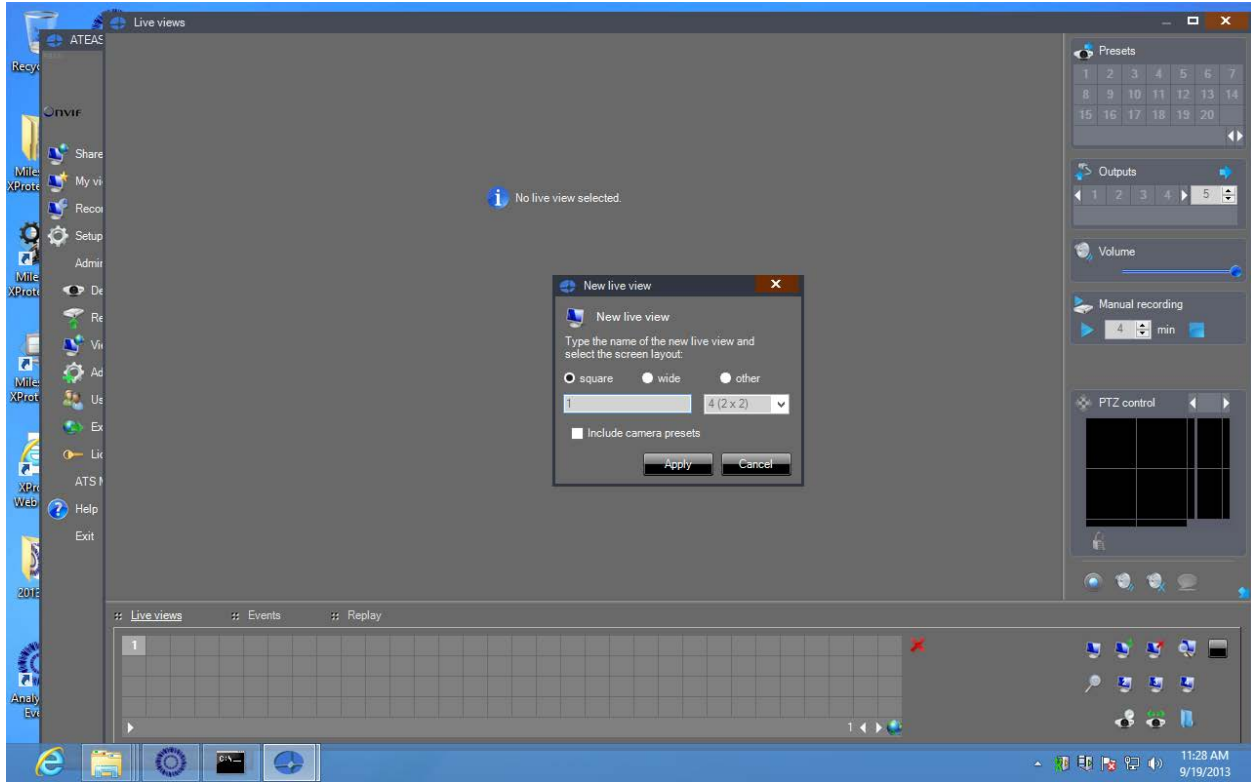


Figure 10. Configuring Live View.



Figure 11. Configuring the events.

## 6 CONTACT US



**Support:** [support@analyticvideo.com](mailto:support@analyticvideo.com)

**Licensing:** [bizdev@analyticvideo.com](mailto:bizdev@analyticvideo.com)

**Web:** [www.AnalyticVideo.com](http://www.AnalyticVideo.com)

# *i.Dot*

### Headquarters

**Institute of Digital and Optical Technologies B. V.**

**Postal address:** De Lairessestraat 160-C, 1075 HM  
Amsterdam, the Netherlands

**Fax:** +31.20-8908634

**E-mail:** [bizdev@idotbv.nl](mailto:bizdev@idotbv.nl)

**Web:** [www.idotbv.nl](http://www.idotbv.nl)

Copyright © 2013 Institute of Digital and Optical Technologies B. V. All rights reserved.

This guide is for informational purposes only. No warranties, express, implied or statutory, as to the information in this document. Complying with all applicable copyright laws is the responsibility of the user. Without limiting the rights under copyright, no part of this document may be reproduced, stored in or introduced into a retrieval system, or transmitted in any form or by any means (electronic, mechanical, photocopying, recording, or otherwise), or for any purpose, without the express written permission of Institute of Digital and Optical Technologies B. V.